

Japanese Beetle

Popillia japonica

Coleoptera: Scarabaeidae



Melissa Schreiner

Entomologist, CSU Extension

Tri-River Area, Western Colorado

Celebrating 12 years at CSU

Melissa.Schreiner@colostate.edu

970-244-1838



TRI-RIVER AREA
COLORADO STATE UNIVERSITY
EXTENSION

Why are Japanese beetles an issue in Colorado?

1) Threaten food production on farms!

Nursery production exports are stopped meaning our nurseries loose markets into other states

2) They can **continue to spread** to other areas of Colorado or to other states

3) Harm landscape plants

Gardens and Landscapes

Parks, Golf Courses,

Country Clubs

Why we do **not** want the Japanese beetle to stay in the Grand Valley...



Will harm residential/urban landscapes by killing turf grass and feeding on plants

Currently harming the local green industry trade

NM has declined imports from Mesa County!

Could spread to new areas locally or out of area

Could become a pest of tree fruit and grapes

**Japanese beetles
feed on many types
of plant parts:
foliage, flowers,
fruits**

**Adults skeletonize
many types of
plants.**

**Larvae or grubs feed
in irrigated turf
grass**



Favorite plant hosts of Japanese beetle adults

Ornamentals

- Hollyhock*
- Roses**
- Silver Lace**
- Littleleaf Linden*
- Virginia Creeper*
- Gaura**
- Crabapple
- Japanese Maple
- Contoneaster

Food Crops

- Beans
- Basil
- Raspberry*
- Grape

* = adults overlap with flowering

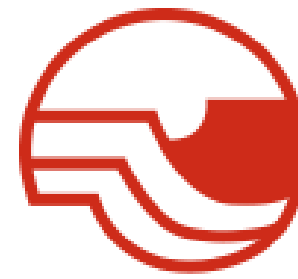
** = adults majorly overlap with flowering



Japanese beetle adults attacking various plants



Coordinating the treatments of lawns to control next season's larvae



MESA COUNTY



Mesa County Japanese beetle trapping program



COLORADO
Department of Agriculture

Providing education, answering questions on biology or providing identifications supporting trapping efforts



TRI-RIVER AREA
COLORADO STATE UNIVERSITY
EXTENSION



MASTER GARDENER
COLORADO STATE UNIVERSITY
EXTENSION



WESTERN COLORADO
RESEARCH CENTER
COLORADO STATE UNIVERSITY

Provided a post card mail out, treated parks, and has plans for some 2024 outreach and education



Western Colorado
HORTICULTURAL SOCIETY

SUPPORT!

D51

Churches

Industry

Community Members

HOAs

School District 51
MESA COUNTY VALLEY



COLORADO
Wine Industry
Development Board



CAVE

COLORADO ASSOCIATION FOR
VITICULTURE & ENOLOGY



Bookcliff Gardens
nursery & landscape

Trapping adult Japanese beetles in the Grand Valley in 2023:

Colorado Department of Agriculture



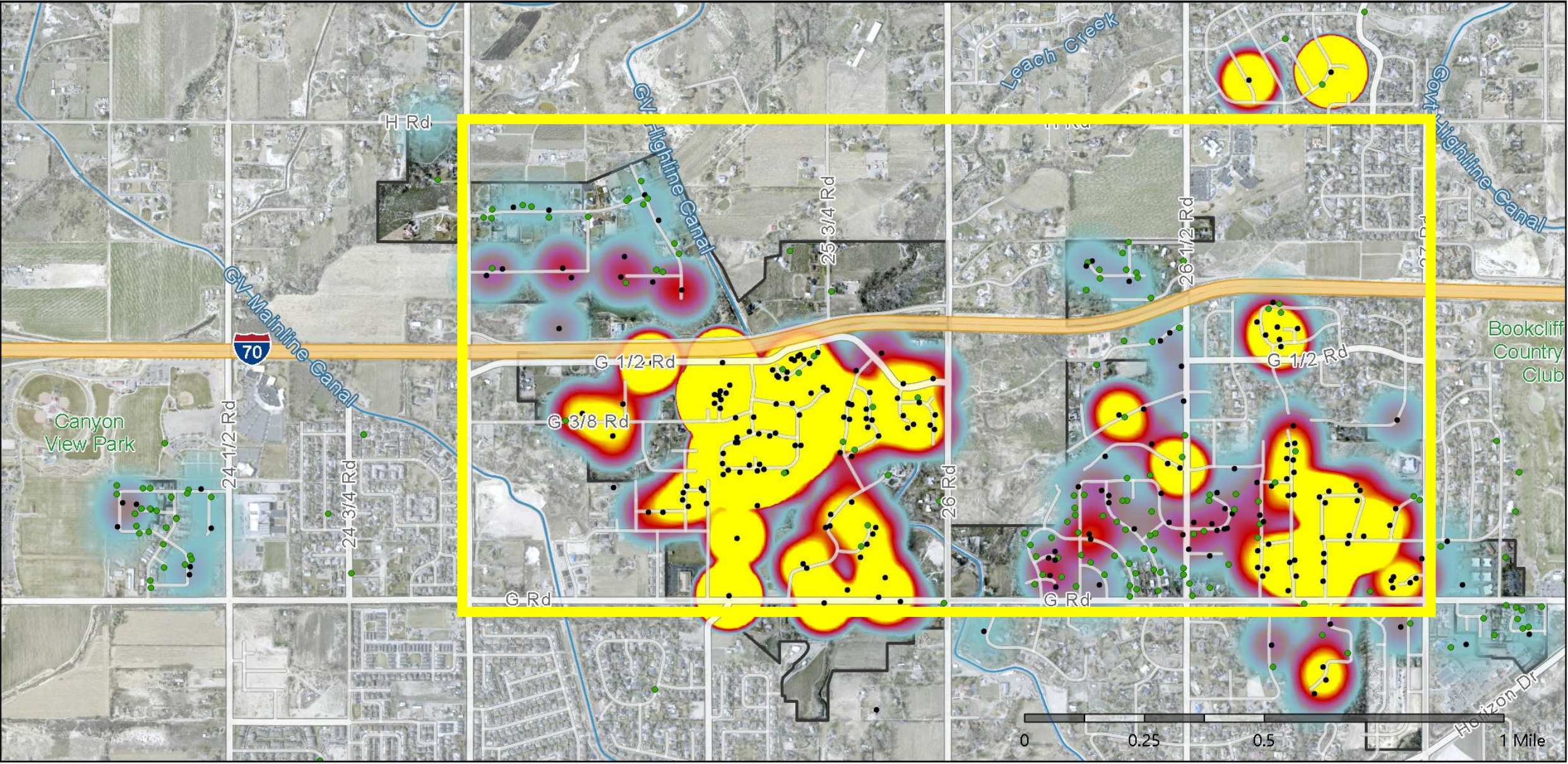
- CDA is checking over **434** traps in 2023 in and around the impacted area that was discovered in 2022
- CDA has legal authority in CO to trap private properties)

CSU Extension Entomology



- UGVPCD ~**20**
- 2023 Citizen Scientist Traps **100+**





JAPANESE BEETLE HEAT MAP
2023 OVERVIEW*

Grand Junction, CO



Map produced in Arc GIS Pro by Melissa Franklin, CSU Extension



Japanese Beetle Trapping 2023 Mesa County

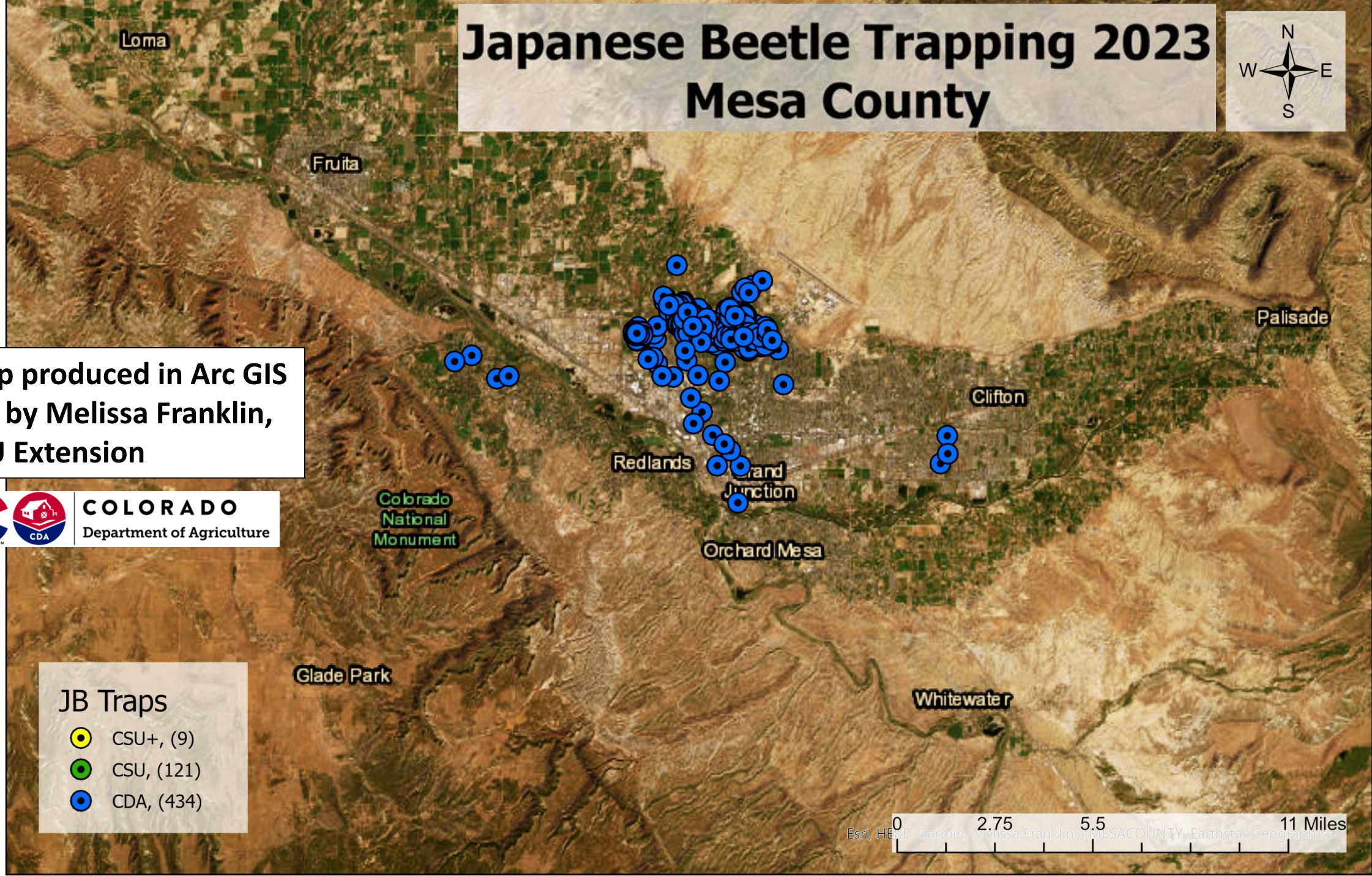


Map produced in Arc GIS Pro by Melissa Franklin, CSU Extension



JB Traps

- CSU+, (9)
- CSU, (121)
- CDA, (434)



Japanese Beetle Trapping 2023 Mesa County

Map produced in Arc GIS Pro by Melissa Franklin, CSU Extension

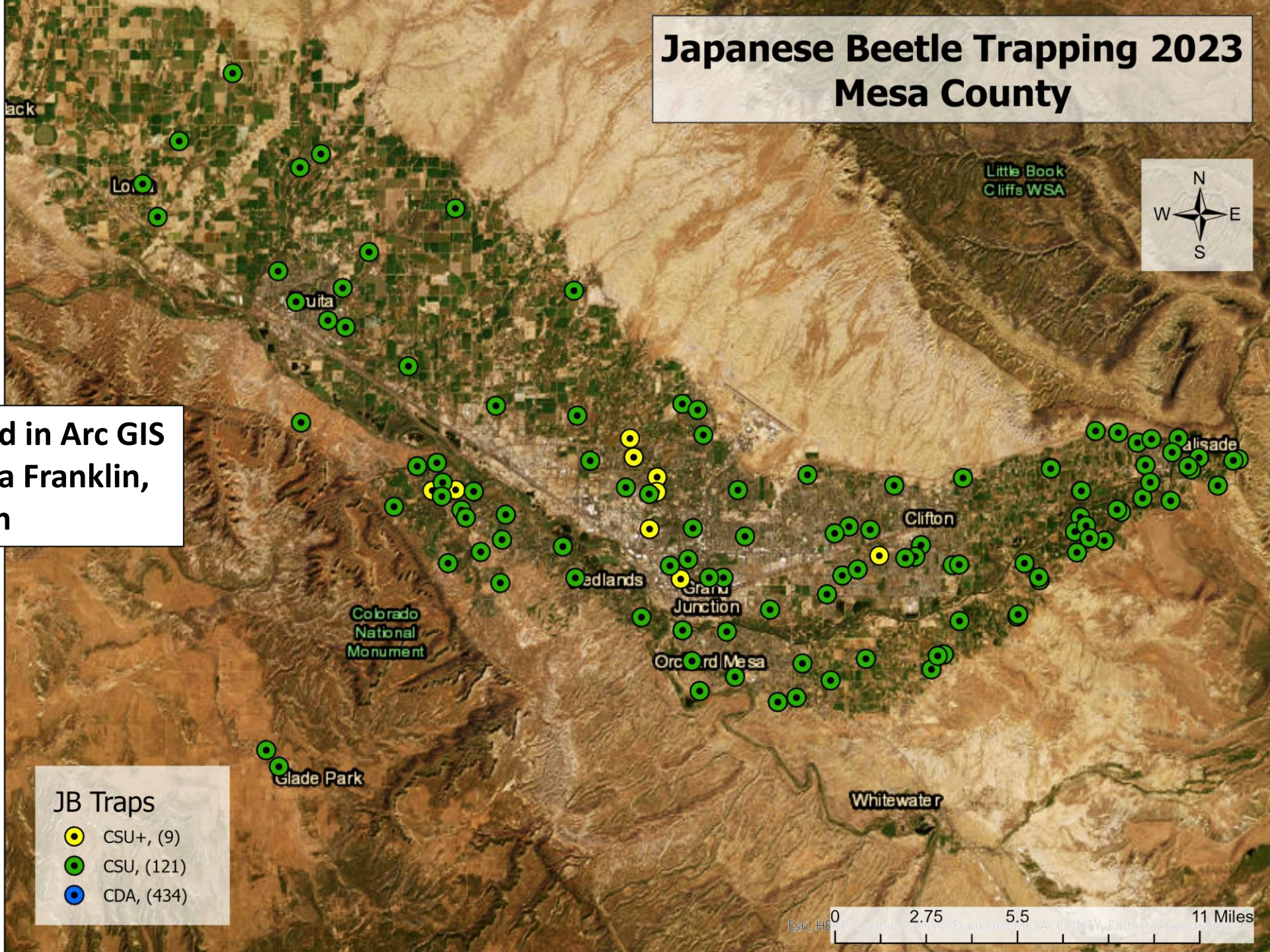
TRI-RIVER AREA
COLORADO STATE UNIVERSITY
EXTENSION

WESTERN COLORADO
RESEARCH CENTER
COLORADO STATE UNIVERSITY

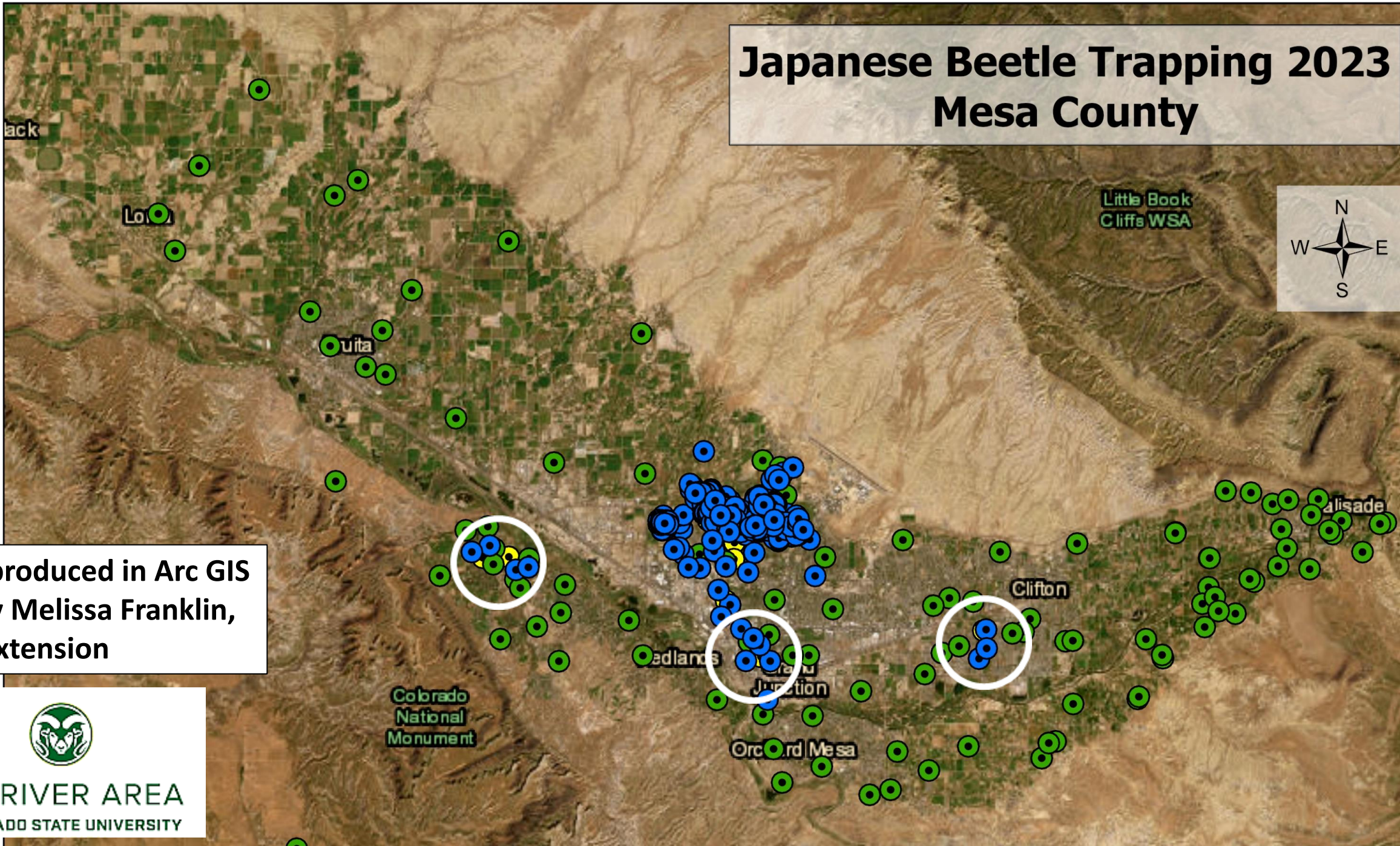


JB Traps

-  CSU+, (9)
-  CSU, (121)
-  CDA, (434)



Japanese Beetle Trapping 2023 Mesa County



Map produced in Arc GIS Pro by Melissa Franklin, CSU Extension



2022

- 239 beetles were caught in X # of traps by CDA
- No beetles caught in the UGV pest control district

2023

- 5752 beetles were caught in X # of traps.
- One beetle has been detected in the UGV pest control district

2024

- All partners are dedicated in continuing efforts
- Public information campaign
- Trapping and treatment will continue:
 - CDA will trap the original breeding ground.
 - We still expect to catch beetles this year.
 - CSU will again ask citizens to set out traps.
- Mesa County has committed significant funds to provide further aid in 2024
- Grand Junction has devoted some funds for public outreach

**Sign up for the CSU Extension
2024 Japanese beetle citizen
science project!**

All supplies will be provided.

Training date in April 2024

**Participation will be determined by
your location and supplies available.**

