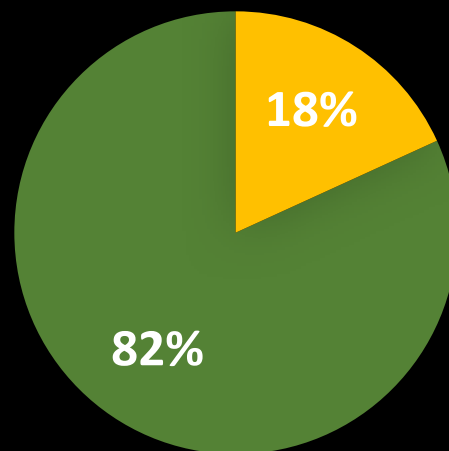
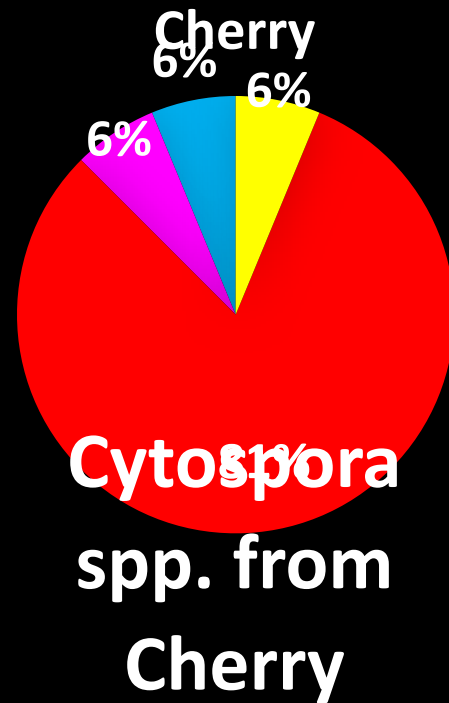


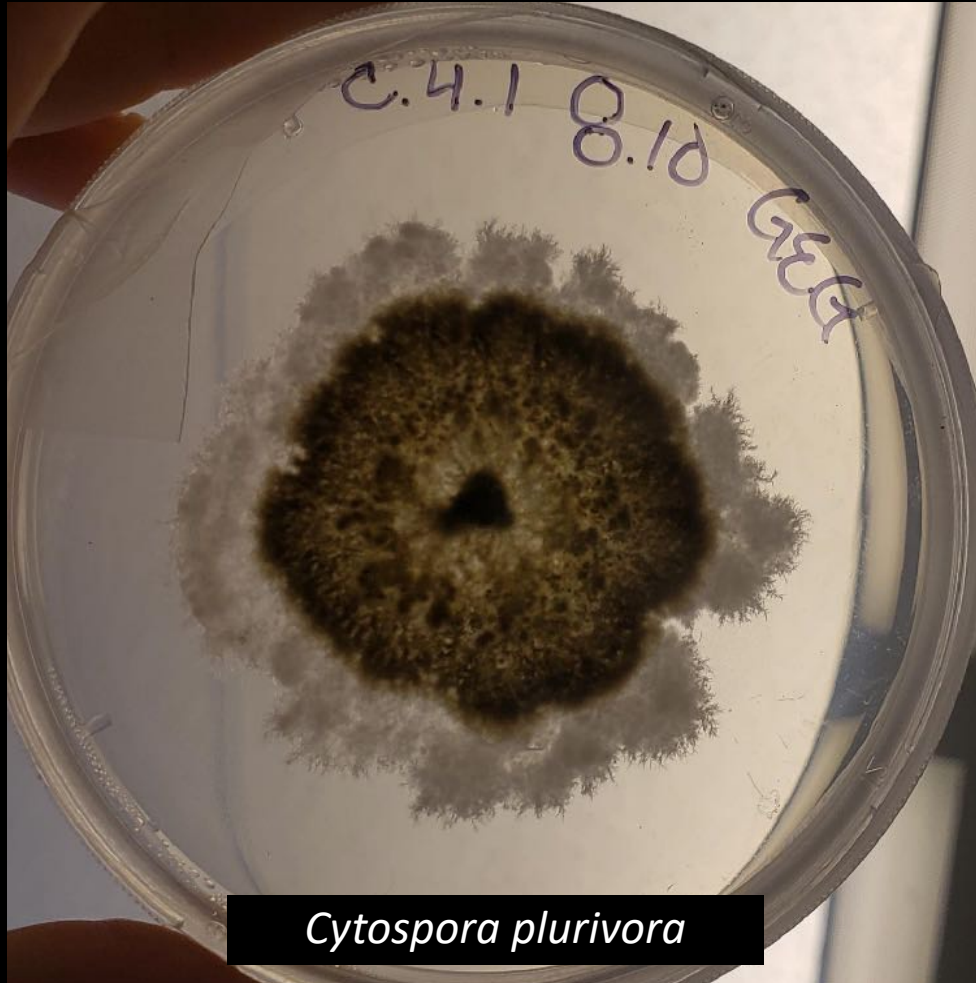
# Diversity of fungi found in Symptomatic tissue on Cherry

- Four fungal genera were found on Cherry:
  - *Cytospora*, *Alternaria*, *Fusarium*, and *Preussia*
- *Cytospora*
  - *C. plurivora* and *C. chrysosperma*

Fungal Genera on



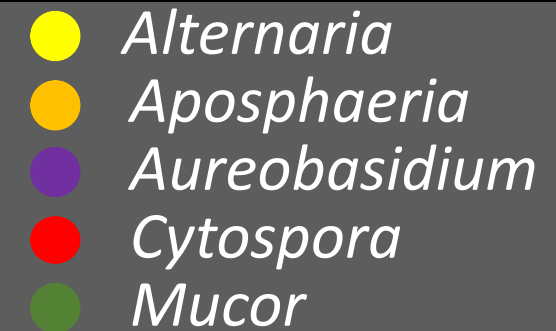
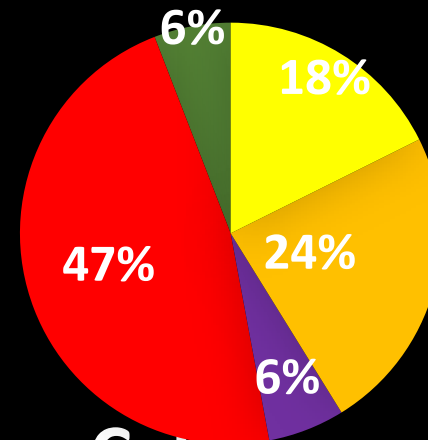
# Cytospora Isolates from Symptomatic tissue on Cherry



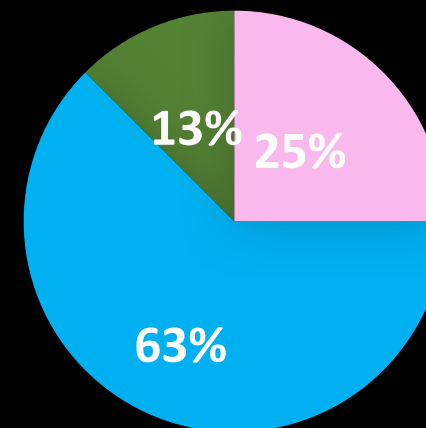
# Diversity of fungi found in Symptomatic tissue on Apple

- Five fungal genera were found on apple:
  - *Cytospora*, *Alternaria*, *Aposphaeria*, *Aureobasidium*, and *Mucor*
- *Cytospora*
  - *C. globosa*, *C. parasitica*, and *C. chrysosperma*

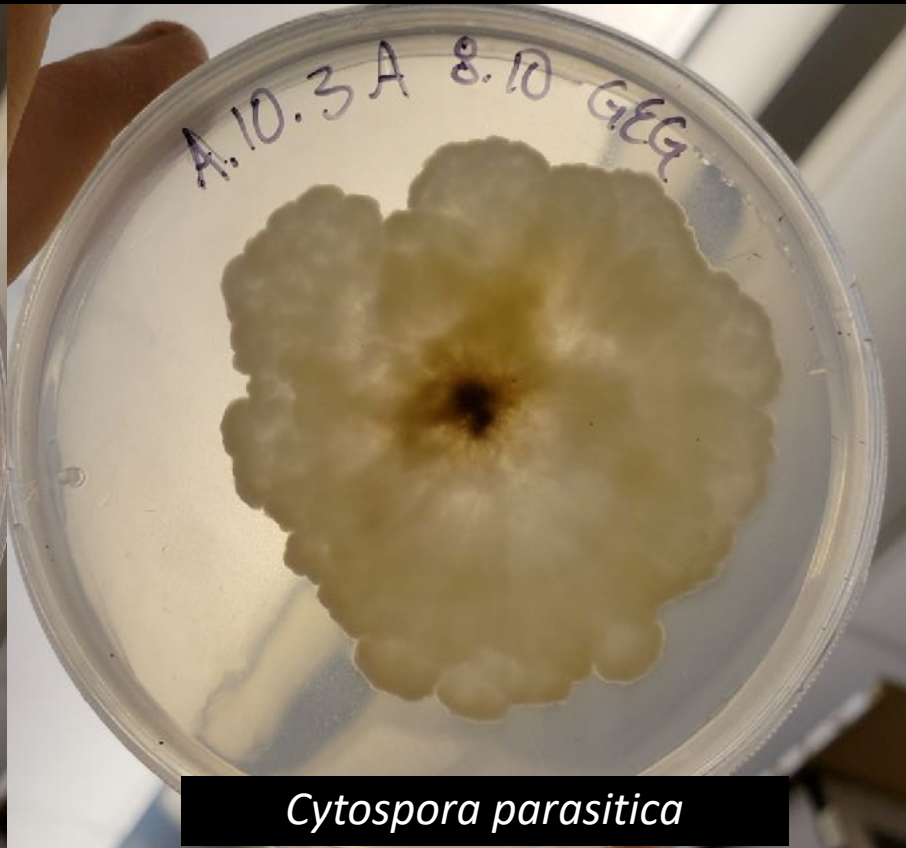
Genera on Apple



*Cytospora* spp. from Apple



# Cytospora Isolates from Symptomatic tissue on Apple

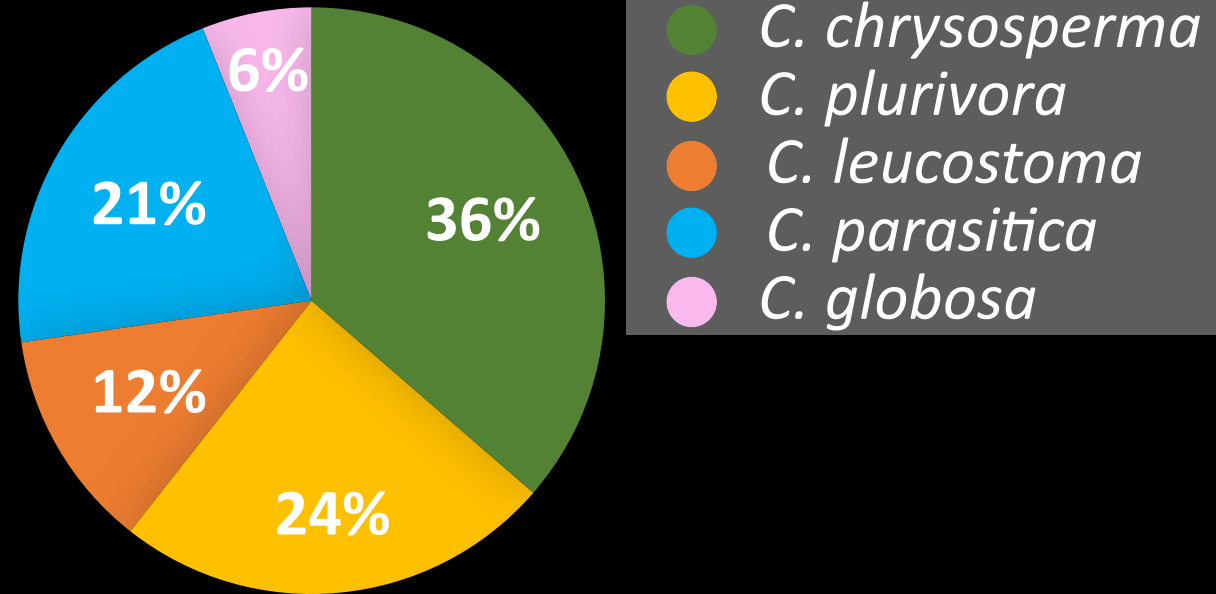




# *Cytospora* Species across hosts

- Five species of *Cytospora*
- *C. chrysosperma* was identified in the greatest percentage at 37%
- Host overlap with three *Cytospora* spp.
  - *C. chrysosperma*
  - *C. plurivora*
  - *C. parasitica*

## *Cytospora* spp. Identified



Genus	Apple	Cherry	Peach
<i>C. chrysosperma</i>	1	11	-
<i>C. plurivora</i>	-	2	6
<i>C. leucostoma</i>	-	-	4
<i>C. parasitica</i>	5	-	2
<i>C. globosa</i>	2	-	-

# Fungal Diversity on Symptomatic Tissue

- *Cytospora* collected at 70%
- The greatest diversity was found in apple
- Some of the other fungi collected have the capacity to act as a pathogen

Genus	Apple	Cherry	Peach
Alternaria	3	1	2
Aposphaeria	4	-	-
Aureobasidium	1	-	-
Cytospora	8	13	12
Mucor	1	-	-
Fusarium	-	1	-
Preussia	-	1	-

# Take Aways

- *Cytospora* is present in all the blocks surveyed
  - *Cytospora* spp. overlap across the three hosts
- Not all the fungi collected are known pathogens

With these findings, we gain a better understanding of *Cytospora* diversity across hosts and lay a foundation to further investigate the behavior of *Cytospora* pathogens.





# Next Steps

- Sequence samples at a different region to confirm identify of *Cytospora* species
- Survey in commercial orchards and CSU research stations
- Future work will test the pathogenicity of the *Cytospora* species
- Continue with the Stewart lab assisting with *Cytospora* canker related projects







# Thank you!

Special thanks to my mentors, Dr. Jane Stewart, Susan Carter, and Sean Wright.  
As well as the staff at the Orchard Mesa research station and my colleagues at the  
Stewart Lab.